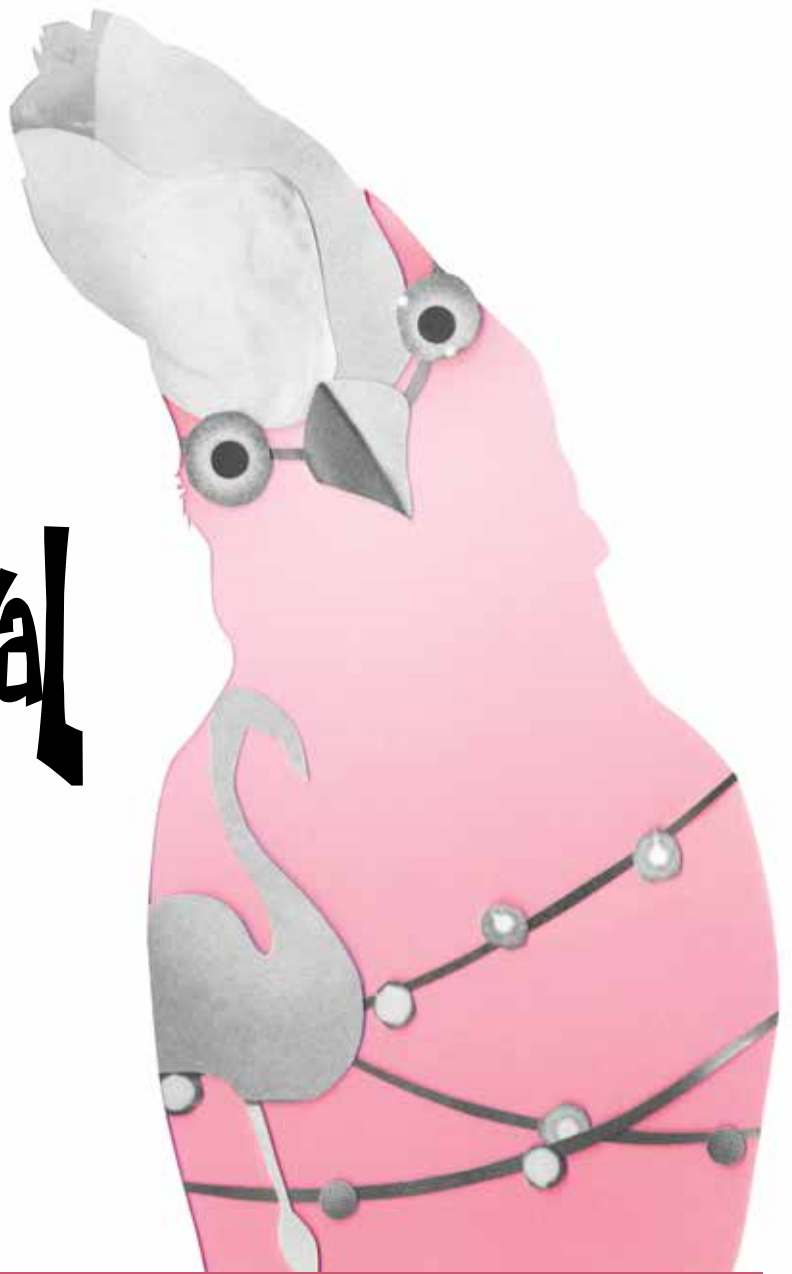


DECEMBER 13, 14 & 15

# Meredith Music Festival

# 23



## POCKET COMPANION

Thankyou Very Much for being part of Meredith23. Pocket Companion is designed to help make your time here incredibly smooth and outrageously enjoyable. Please have a good read of it all, even if you have flown with us before. And: bring it with you.

Important things that we can't stress enough to veterans and newcomers alike include these: Bring a good waterproof coat, gumboots and/or boots and lots of socks, don't bring any glass, do bring a big bagful of warm and waterproof clothes and warm bedding as it will get really cold at night, put your wristband on (not too tight) as you leave home and don't remove it till you're out the gate at the end of the festival, carry photo ID even if you are 73, get your tent/caravan/inflatable kingdom out now and make sure it's in good working order and arrive in convoy if you want to camp together. NO FIRES – it's a Total Fire Ban day and night.

Remember - although Meredith may feel like a sovereign dominion (her own country), the usual laws apply within the festival boundaries as they do outside them. Likewise, the laws of the human body are no different there than anywhere else. So Please Look After Yourself And Others. The Gates open 9am Friday and live music starts from 4pm that day. Plenty of time to get in and set up before It starts.

Read on carefully, go to [mmf.com.au](http://mmf.com.au) for further info on anything, and I very much look forward to The Pleasure of Your Company,

A handwritten signature in black ink that reads "Aunty Meredith". The signature is stylized and cursive.

Aunty Meredith

PLEASE FORWARD THIS ONTO YOUR FRIENDS WHO ARE COMING

## BRING THESE THINGS

- ❑ Your **TICKET** (wristband). Double-check you have it now. Put it on as you leave home, not too tight.
- ❑ **PHOTO ID** - carry it at all times, even if you are 73.
- ❑ Plenty of warm, waterproof clothes and a good **WATERPROOF** coat.
- ❑ Plenty of warm bedding/duonas/sleeping bag/blankets – nights get **COLD**, even if days are hot.
- ❑ A good tent, caravan, panelvan, luxury motorhome etc – good shelter in good condition to sleep well in.
- ❑ Boots, gumboots, good outdoor shoes, plenty of socks.
- ❑ Sunsmart items - hat, sunscreens, long-sleeve shirt, sunglasses etc.
- ❑ Cans or plastic bottles instead of glass – **no glass** is allowed on site.
- ❑ Directions to get there. They are included in this Pocket Companion.
- ❑ Bulk (10ltr +) drinking water for your campsite and refillable plastic water bottles.
- ❑ Cash. There are limited cash-out facilities.
- ❑ Play safe, pack condoms (STIs are reportedly rapidly rising so please play safe and if you run out of condoms visit your nearest Helper Hut)
- ❑ Mobile phone and spare charged battery if you have one. There are no powerpoints.
- ❑ Any medication you need - there is no pharmacy on site. If you suffer from hayfever come prepared with your regular medication/pills.
- ❑ Insect repellent (eg Rid, Bushman's Gel, Aerogard).
- ❑ Tent marker or flag for the car aerial etc. Tents all look the same.
- ❑ Torch or battery-powered camplight. Spare batteries.
- ❑ Spare tarp.
- ❑ Smokers – by law smokes cannot be sold onsite anymore so bring enough for you and your 'friends' for the duration, or quit.
- ❑ Plenty of tie down ropes to take your couch home when you leave.

## TRESPASSERS BEWARE

Any person who attempts to use an invalid or forged Festival Wristband to enter the Meredith Supernatural Amphitheatre will be handed over to Police. Anyone found wearing an invalid or forged Festival Wristband will be regarded as a trespasser and handed over to Police. The wearer will be taken to the Police Station and may be charged with Falsification of a Document, Obtaining Financial Advantage By Deception and Trespass. The maximum penalty for these dishonesty crimes is 10 years imprisonment. Alternatively a criminal conviction and or a substantial fine are almost certainties. It is your responsibility to ensure the validity of your Festival Wristband. It is not possible to purchase a forged Festival Wristband through the Subscriber Ballot, Selected Store Sales or Online Sales. The Trespasser Policy can be viewed at [mmf.com.au](http://mmf.com.au)

## RULES

- **NO FIRES. TOTAL FIRE BAN** day and night. Please leave all gas bottles, gas kegs, candles, lanterns, cookers, BBQs, generators, fireworks and lasers at home.
- The site is a farm so **NO GLASS AT ALL**. Bring cans or plastic bottles instead, or decant drinks into plastic containers **BEFORE** you leave home.
- Even if you are 55 and look 66, **BRING PHOTO ID**.
- Gates open at 9am on Friday. Please don't come earlier, roadblocks are in place.
- Travel in convoy if you want to camp together. No reserved camping or parking.
- Anyone trespassing or assisting anyone to trespass will be ejected from the festival and charged with trespass. Please don't cross festival boundaries including out of bounds areas at any time. Access via any other point other than the one official entry/exit is trespass.
- **Designate a driver. Arrive and leave well under .05.** Monitor your alcohol intake or you may face heavy penalties and/or loss of license.
- Keep all internal roads clear for emergency vehicles.
- No swimming in the dams.
- **Take care under trees** - branches can drop and please don't climb them.
- No bean bags please – those little foam beads don't mix well with the natural environment when the bean bag breaks.
- Elevated/raised couches, chairs and platforms are ok in the campgrounds but not in the Amphitheatre. No couches on stilts, no stools, nothing above normal sitting chair or couch height, no temporary marquees, gazebos, structures or anything that blocks the view for others in the Amphi. Please and thank you.
- Take couches, chairs, gazebos, tents, etc home with you at the end to reduce landfill. The Sup' is not a dumping ground.
- Wear your festival ticket (wristband) at all times during the festival and only remove it when you are on your way home.
- Follow all terms and conditions, viewable on the website.
- Kegs that don't use gas are ok in the campgrounds, but no kegs at all in the Amphitheatre.
- Please don't wee on our neighbours' fences anytime anywhere ever.
- **NO DICKHEADS** – that includes no stage diving, crowd surfing, moshing or aggressive behaviour. Leave any dickheads at home, thanks.

## CAUTION FIRE WARNING

- **TOTAL FIRE BAN ALL DAYS AND NIGHTS**
- **NO FIRES**, flares, firesticks, fireworks, candles, generators, BBQs or cooking of any kind, inside or out.
- No gas bottle fridges or kegs that require cylinders.
- Smokers and nonsmokers ensure butts are 100% extinguished every time. Drench them in the dregs of a can. Or grind them fully out and bin them.
- Do not park ANY part of your vehicle on roads so emergency services have full access.
- Keep campsites clear from flammable material and rubbish.
- Free drinking water tanks in the food courts can be used for bulk water refills.
- Don't leave your vehicle running longer than necessary.
- Avoid setting up camp next to vehicle exhausts.

# NO DICKHEADS

That includes no stage diving, crowd surfing, moshing, aggressive behaviour, blocking views in the Amphi or overly loud music in campgrounds.

Leave dickheads at home, thanks. Think you've spotted one of these rare, unwelcome creatures? Let the Info Centre or your local Helper Hut know.



DICKHEADS  
AREN'T  
WELCOME  
HERE.

# TAKE YOUR FURNITURE HOME



All couches, gazebos, tents and other furniture need to travel home with you. Ripped. Torn. Broken. Soggy. No matter what condition. Give them a life outside landfill, for everyone's sake.

## PLAYING TIMES

### FRIDAY

4:00 - 4:40PM	WARPED
5:00 - 5:40	STONEFIELD
6:00 - 6:40	D.D DUMBO
6:45	HOUSEKEEPING
7:00 - 7:50	DEERHUNTER
8:10 - 9:00	MELVINS
9:20 - 10:00	WORLD'S END PRESS
10:30 - 11:30	BRIAN JONESTOWN MASSACRE
12:00 - 12:50AM	CLAIRY BROWNE & THE BANGIN' RACKETTES
1:10 - 1:50	LE1F
2:05 - 3:00	JON HOPKINS
3:10 - 4:00	ROLAND TINGS
4:00AM IS	CURFEW
4:00 - 10:00AM	SILENCE WEDGE
INTERSTITIAL SOUNDTRACK BY: EDD FISHER & DAVE THE SCOT	

### SATURDAY

10:00 - 10:40AM	CITY OF BALLARAT MUNICIPAL BRASS BAND
11:00 - 11:40	COURTNEY BARNETT
12:00 - 12:40PM	MAC DEMARCO
1:00 - 1:40	THE SMITH STREET BAND
2:00 - 2:40	DICK DIVER
2:45	HOUSEKEEPING
3:00 - 3:40	JOEY BADA\$\$
4:00 - 4:50	THE BAMBOOS
5:15 - 6:00	HELMET
6:20 - 7:05	BEASTS OF BOURBON
7:10	HOUSEKEEPING
7:30 - 8:20	HERMITUDE
8:50 - 9:50	SPIDERBAIT
10:20 - 11:50	CHIC FEATURING NILE RODGERS
12:30 - 2:00AM	TRANTER
2:00 - 3:30	TIM SWEENEY
3:30 - 5:30	DERRICK MAY
5:30 - 7:00	ANDEE FROST
INTERSTITIAL SOUNDTRACK BY: DJ PEOPLE, DJ FEE B2 & BENNIS	

### SUNDAY

7:00 - 9:00AM	SILENCE WEDGE
9:00 - 9:40	MASTER SONG TAI CHI
10:00 - 10:40	BAPTISM OF UZI
11:00 - 11:40	OLIVER TANK
12:00 - 12:40PM	DAVIDSON BROTHERS
1:00 - 1:40	BEACHES
2:15 - 2:45	THE MEREDITH GIFT
2:45 - 3:15	THE UV RACE
4:30PM	GATES CLOSE
SPECIAL GUEST:	ANGUS SAMPSON
GIFT MISTRESSES:	THE TOWN BIKES
INTERSTITIAL SOUNDTRACK BY: ZAN ROWE	

## PLEASE LOOK AFTER YOURSELF & OTHERS

Here at the Supernatural Amphitheatre, we want you to have the best possible time. The time of your life. We also want your friends and the people around you to have a great time. Please don't stuff that up by being irresponsible for your wellbeing.

- Dress sensibly for the conditions. Wear shoes.
- Rest and rehydrate. Drink water regularly and eat well.
- Please wash your hands.
- Mixing alcohol and drugs greatly increases the possibility of overdose or accidents, as does mixing two or more drugs, even if taken hours apart.
- If you have a viral or bacterial illness please stay at home, to keep from infecting others.
- Do not use drugs. But especially do not use drugs on your own. If you are feeling unwell – tell someone.
- If you or a friend has taken drugs and is in need of medical attention the first aid staff are not obliged to involve the Police and they won't judge you. They are here to help. So please go to First Aid and be honest with them.
- Be careful mixing alcohol and energy drinks. The caffeine and sugar wear off before the effects of alcohol.
- Check under and around your vehicle before leaving the site.
- If you plan to drive home on Sunday, monitor any alcohol intake on Saturday night – you may be over the legal limit on Sunday and face heavy penalties and/or loss of license.
- Keep your campsite secure from wind. Weight the interior corners of your tent.
- Register your mobile number for important festival alerts at [mmf.com.au/sms](http://mmf.com.au/sms)

## SAFETY FIRST

Your safety is paramount to us. As part of our Safety Management Plan we have emergency management services and trained staff on-site and operational 24 hours over festival weekends.

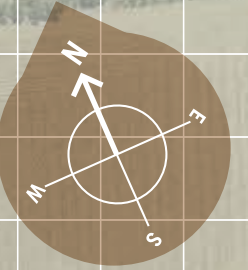
We work with a dedicated team from Police, Fire, Ambulance, Golden Plains Shire and independent risk and safety management professionals to continually strengthen our Plan to reflect current best practice. Every critical safety decision is made collaboratively with this team who are very supportive of the festival. We appreciate and respect their work.





### LEGEND

	INFO CENTRE K14		SHUTTLE BUS STOP 18
	FIRST AID K13		ACCESSIBLE TOILET/SHOWER K12/K13
	HELPER HUTS 68, 612, H14, M11, N8, 010, 014, 011, R12, S9, U11, U15		SIGN IN K14
	TOILETS 07, 68, 612, J13, M8, M12, 015, 011, S8, U11		ARTIST MERCHANDISE L14
	SHOWERS L11, 014		DRINKING WATER TANK D7, 68, K13, N8, N15, 011, S9, U11
	FIRE RESPONSE 19		MEREDITH EYE N12
	PRIMARY EMERGENCY ASSEMBLY AREA M14		ECOPLEX CINEMA J15
	INCIDENT COORDINATION CENTRE K14		RUBBISH WORLD K7
	PINK FLAMINGO BAR M12		THE ROCHESTER 011, 012
	ICE SOLD HERE N12		MESSAGE N15
	BEER SOLD HERE L12		
	ERIC'S TERRACE 014		
	HEAVEN ELEVEN QUICKY MART L14		
	FREE BREATH TESTING BY WAVESSA H7		
	THE GIFT SHOPPE L14		
	RUBBISH DROP OFF 612, J10, M8, 011, S8, U11		
	POLICE K13		
	FESTIVAL BOUNDARY		



### QUICK GUIDE

- In an emergency or time critical incident DIAL 000. The address is Meredith Supernatural Amphitheatre, corner of Mount Mercer & Nolan Roads, Meredith. Melway's Map: 611 CA.
- First Aid and Police are located at grid reference K13, to the right of the stage near the International Food Court. First Fire Response Team are located at grid reference 19.
- If you need First Aid or Police to come to you, text/call the Incident Coordination Centre on 0430 091 120 ask a staff member with a 2-way radio OR send a representative to grid reference K13 to direct them to your location. Use the festival grid reference when referring to your location. For 24 hour camping support, familiarise yourself with the location of the Helper Huts.
- In the event that an area needs to be cleared do not attempt to leave the site by foot or vehicle and remain in the nominated assembly area. Follow the directions of emergency management staff.

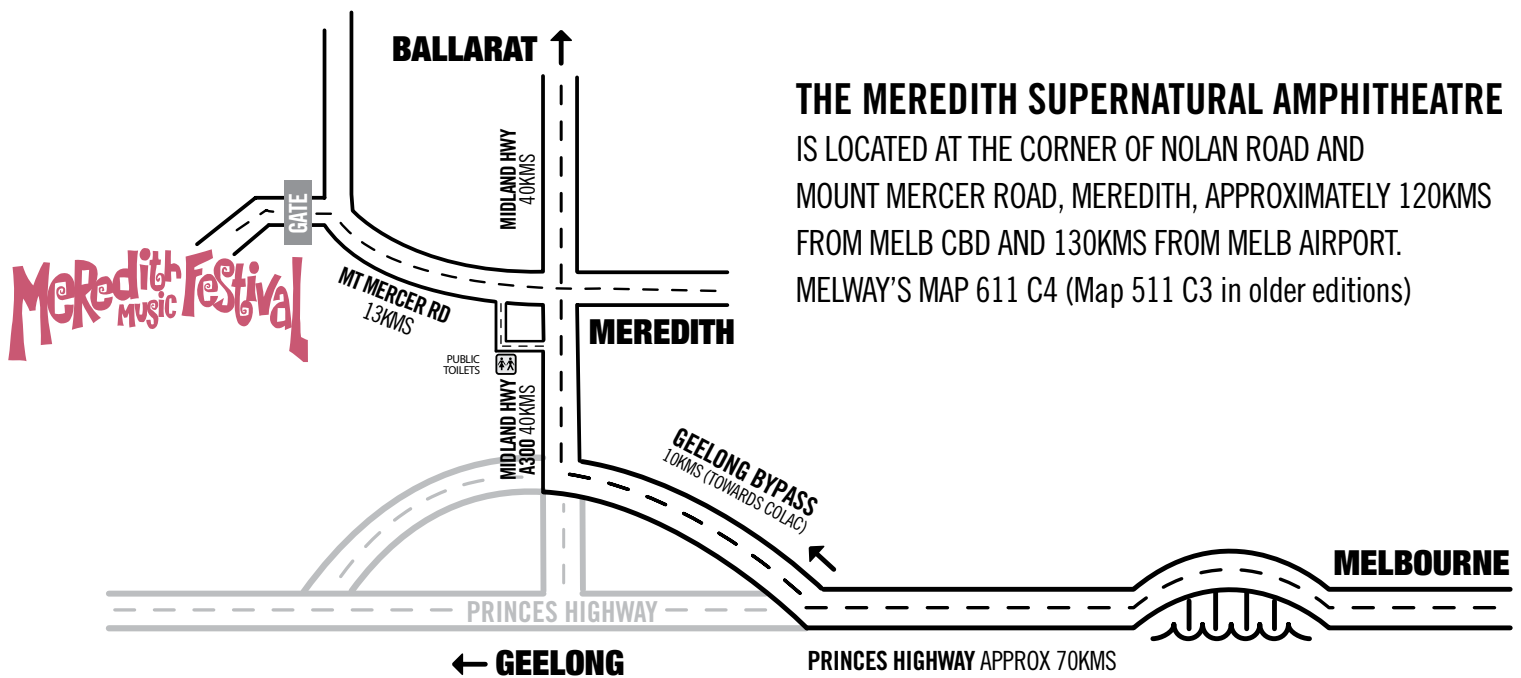


- #### International Food Court -
- Fish & Chips
  - Espresso Au Go Go
  - Bata Organic Pizza
  - Frisco Coffee
  - Traditional Baked Potatoes
  - Breakfast Kitchen
  - Hare Krishna
  - Palamio
  - The Forge Pizzeria
  - Little Champs
  - Community Tuckler Tent
  - Waffleworks

- #### Southank Food Court -
- Coconut
  - Gourmet Gazleme
  - Flying Calamari Brothers
  - Gyza Records
  - Hotties Eat Rolls
  - Menna and the Bean
  - Panzerotti
  - The Orange Lady
  - Badger Vs Hawk & Machine Coffee
  - The Briller Cart
  - Taco Truck
  - Banth Mt boys

# HOW TO GET TO THE MEREDITH SUPERNATURAL AMPHITHEATRE

**GATES OPEN AT 9AM ON FRIDAY. PLEASE DON'T COME EARLIER, ROADBLOCKS ARE IN PLACE**



**THE MEREDITH SUPERNATURAL AMPHITHEATRE** IS LOCATED AT THE CORNER OF NOLAN ROAD AND MOUNT MERCER ROAD, MEREDITH, APPROXIMATELY 120KMS FROM MELB CBD AND 130KMS FROM MELB AIRPORT. MELWAY'S MAP 611 C4 (Map 511 C3 in older editions)

## DRIVING DIRECTIONS FROM MELBOURNE

From Melbourne, take the Princes Hwy to Geelong.

As you approach Geelong veer right onto the Geelong Bypass following the signs to Colac.

Travel on the Geelong Bypass for about 10kms and then take the Ballarat Exit A300.

Turn right onto the A300 and head towards Ballarat for about 40kms until you get to Meredith.

At Meredith, turn left after the service station. This is Mount Mercer Road.

The Festival is approximately 13kms along this road.

On the Friday of the festival this might take up to 60 minutes as there are holding bays to ensure safe and steady traffic flow.

## DRIVING DIRECTIONS FROM GEELONG AND SURF COAST

From Geelong take the Midland Hwy (A300) and head towards Ballarat for about 40kms until you get to Meredith.

At Meredith, turn left after the service station. This is Mount Mercer Road.

The Festival is approximately 13kms along this road.

## DRIVING DIRECTIONS FROM BALLARAT

From Ballarat take the Midland Hwy (A300) and head towards Geelong for about 40 kms until you get to Meredith.

Turn right after the corner pub in Meredith. This is Mount Mercer Road.

The festival is approximately 13kms along this road.

**PLEASE DON'T WEE ON OUR NEIGHBOURS' FENCES ANYTIME ANYWHERE EVER.**  
PLEASE USE THE PUBLIC TOILETS IN TOWN.

**KEEP ALL INTERNAL ROADS CLEAR FOR EMERGENCY VEHICLES.**

**ANYONE TRESPASSING OR ASSISTING ANYONE TO TRESPASS WILL BE EJECTED.**  
ONLY ACCESS VIA THE CORNER OF MOUNT MERCER AND NOLAN ROADS. STAY WITHIN FESTIVAL BOUNDARIES.